

Draft 5086 LATM Scheme Summary – Gilles Plains

We have developed the draft LATM scheme for Gilles Plains and we would like your feedback. This is a final chance for you to have your say about the draft LATM scheme in your area.

Please see below a summary and map of the proposed treatments.

Road cross-section modifications

Installation of line marking to:

- Formalise parking bays along Wandana Ave

Raised intersection platform

Installation of a raised intersection platform at the following intersection:

- Lurline Ave and Swanson St

Road humps

Installation of road humps:

- Swanson Ave (Numbers 6 and 14)
- Hawker Rd (Numbers 2, 12 and 21)
- Glenroy Ave (Numbers 1, 13 and 33)

Narrow Streets

Parking controls review in line with Council's Narrow Streets Parking & Access Policy:

- | | |
|--------------|----------------|
| • Lewis Ct | • Feature Ct |
| • Lee St | • Powell St |
| • Union Ct | • Brookdale Cl |
| • Marcia Ave | • Edward Cl |
| • Burman Ave | • Lynton Ave |

For more information about the Narrow Streets Parking & Access Policy, please see:

<https://haveyoursay.cityofpae.sa.gov.au/narrow-streets>

Parking review

Installation of parking controls at:

- Near St Paul's College (various school parking improvements)
- Lynton Ave (near Gilles Plains Shopping Centre)
- Parking Study (review parking catchment)

Draft 5086 LATM Scheme Summary – Gilles Plains

Minor intersection linemarking

Installation of separation line and associated parking controls:

- Dally Rd and Feature Ct
- Dally Rd and Fulton St
- Hawker Ave and Carona Ave
- Hawker Ave and Kanowna St
- Kanowna St and Karratta St
- Kopoola Cres and Corana Ave
- Kopoola Cres and Grant Ave
- Wandana Ave and Karratta St
- Wandana Ave and Kopoola Cres
- Kopoola Cres and Corana Ave

Footpath

Installation of new footpaths:

- Milbank Ave to service Oakdale Reserve
- Dally Rd (northern side)

Stage 2 treatments

Considered post 12 month review of other treatments

- Partially indented kiss and drop parking bays on Dally Rd (northern side)

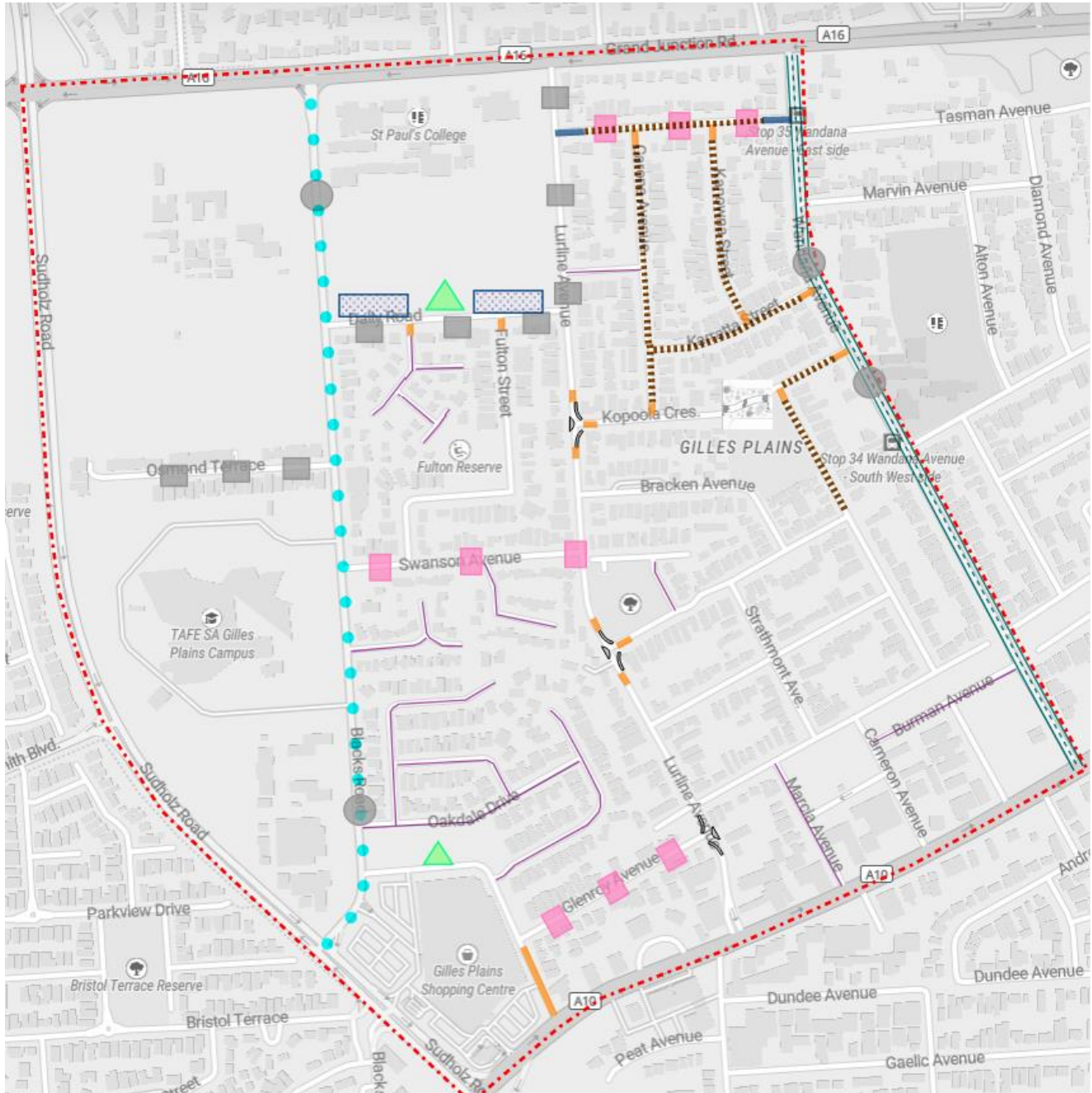
DRAFT LOCAL AREA TRAFFIC MANAGEMENT (LATM) SCHEME

Gilles Plains | 5086



CITY OF
Port Adelaide Enfield

Draft 5086 LATM Map – Gilles Plains



LEGEND

Existing

- Pedestrian Facility
- Road Hump/Raised Intersection Platform
- Intersection Treatment
- Driveway Link

Stage 1

- Road Cross Section Modification (parking bays)
- Narrow Streets
- Parking Control Review
- Parking Study
- Pavement Bar Median

- Path/Kerb Ramp Improvements

- Road Hump/Raised Intersection Platform

Stage 2

- Indented Parking Bay

On Hold

- Review Post Development Activity